

OFFICIAL ZONING MAP

This being the Official Towns of Chestertown Zoning Map, having been passed on Oct. 3, 2016 and became effective on Nov. 7, 2016.

Chris Ceiso, Mayor

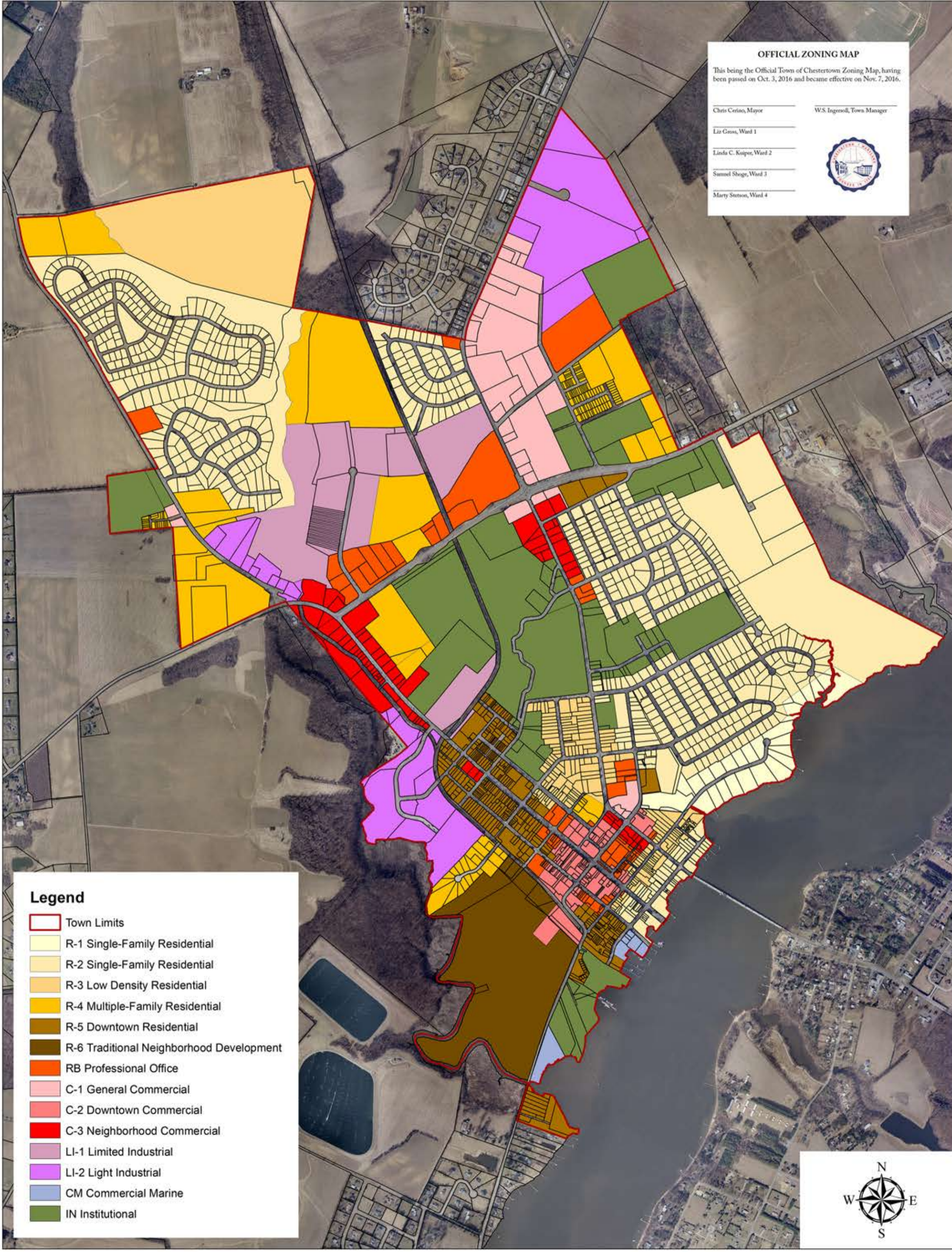
W.S. Ingersoll, Town Manager

Liz Gross, Ward 1

Linda C. Kuiper, Ward 2

Samuel Shige, Ward 3

Marty Stetson, Ward 4



Legend

-  Town Limits
-  R-1 Single-Family Residential
-  R-2 Single-Family Residential
-  R-3 Low Density Residential
-  R-4 Multiple-Family Residential
-  R-5 Downtown Residential
-  R-6 Traditional Neighborhood Development
-  RB Professional Office
-  C-1 General Commercial
-  C-2 Downtown Commercial
-  C-3 Neighborhood Commercial
-  LI-1 Limited Industrial
-  LI-2 Light Industrial
-  CM Commercial Marine
-  IN Institutional

