



**FY 2020 – FY 2022**

# **Community Plan for Children, Youth & Families**





# A STRONG, CONNECTED KENT COUNTY



- 1** Collaborative planning and collective action part of the community's "DNA"
- 2** Small population, 19,384, with close-knit towns and neighborhoods
- 3** Sense of belonging – shared faith that all residents' needs will be better met through a commitment to work together to improve outcomes for all children, youth and families

**TRANSPORTATION**

**AFFORDABLE  
HOUSING**



**CHILDCARE**

**ACCESS TO  
HEALTHCARE**

FY 2020 – FY 2022

# COLLABORATIVE PLANNING PROCESS



## Vision and Leadership:

**Local Management Board** –  
12 leaders

**Guiding Coalition** –  
10 additional leaders

## Community Engagement and Input Gathering:

**4** Turn the Curve data discussions

**136** survey respondents –  
50% community residents

**4** focus groups for needs assessment and asset/gap  
analysis – 78 total participants including youth

**4** key informant interviews



**Total: 227**



## Data and Quantitative Analysis:

- **United Way of Kent County's** 2017 Comprehensive Needs Assessment
- **Maryland Rural Development Corporation** Community-Wide Needs Assessment 2016-2019
- **KCLMB** Data Audit
- **Maryland Department of Juvenile Services**, Kent County Case Management Program

FY 2020 – FY 2022

# COMMUNITY PLAN



## VISION:

Equal access, shared assets, full opportunity.

## MISSION:

Harnessing our collective strengths to connect and lift vulnerable Kent County youth and families.

## PRIORITIES

- 1** Focus on economic mobility for the 600-900 youth and their families impacted by intergenerational poverty.
- 2** Start by addressing the basic needs of youth and their families experiencing poverty
- 3** Strengthen Systems of Care by increasing organizational capacity and collaboration among providers.
- 4** Support proven programs and innovative approaches led by individuals and organizations willing to upend the status quo

## RESULTS:



Children are successful in school



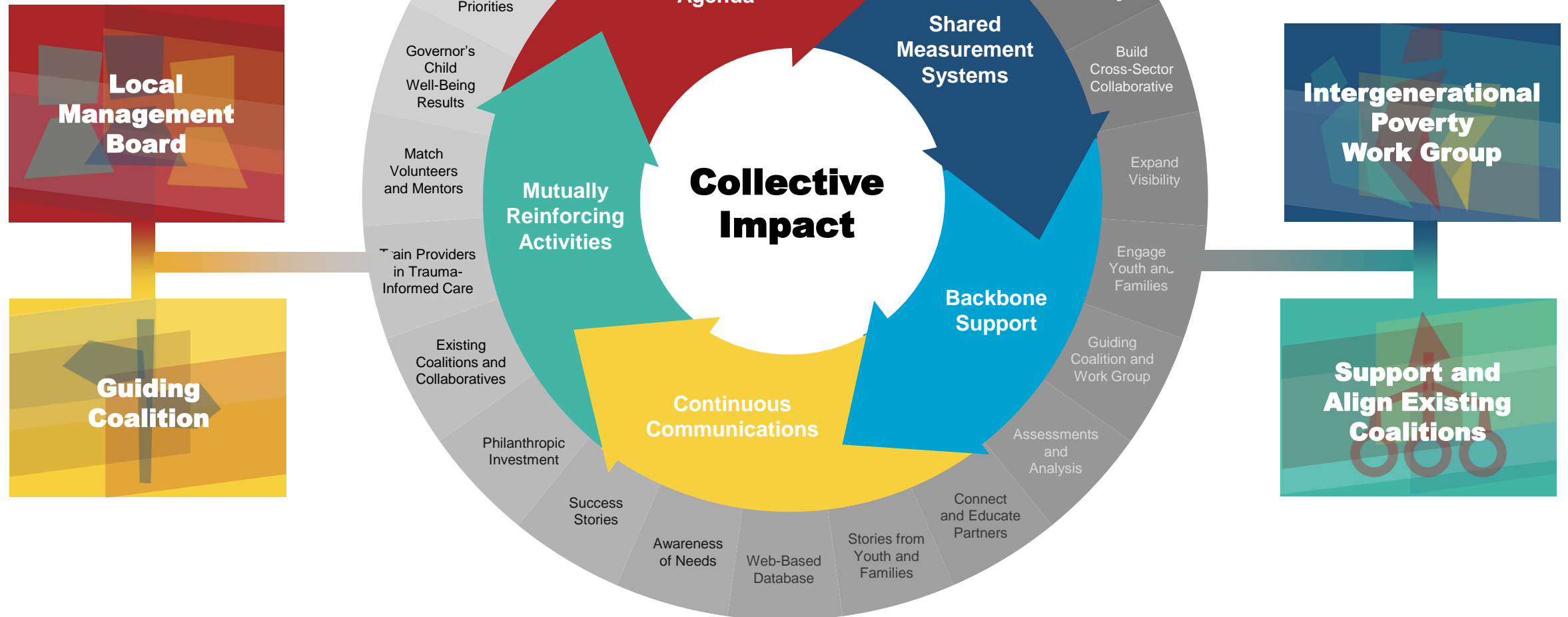
Youth have opportunities for employment or career readiness



Families are safe and economically stable

FY 2020 – FY 2022

# COMMUNITY PLAN



FY 2020 – FY 2022

# COMMUNITY PLAN TIMELINE





# THEORY OF CHANGE

## MOBILITY FROM POVERTY

CHILDREN ARE SUCCESSFUL IN SCHOOL

YOUTH HAVE OPPORTUNITIES  
FOR EMPLOYMENT AND  
CAREER READINESS

FAMILIES ARE SAFE AND  
ECONOMICALLY STABLE

**PUBLIC UNDERSTANDING**

- » HUMANIZE POVERTY
- » EXPOSE STRUCTURAL FORCES
- » DRIVE POLICY

**COORDINATION & CAPACITY  
TO MEET BASIC NEEDS**

- » FOOD » HOUSING
- » TRANSPORTATION

**SYSTEMS OF CARE**

- » WHOLE FAMILY APPROACH
- » TRAUMA INFORMED

CONTEXT: CONCENTRATION OF RURAL POVERTY

**EQUAL ACCESS. SHARED ASSETS. FULL OPPORTUNITY.**





# EXISTING COALITIONS AND COLLABORATIVES

## NAME

## AREA(S) OF FOCUS

Eastern Shore School Mental Health Coalition	Children's school-based mental health services
Mid-Shore Behavioral Health/Child & Adolescent Workgroup	Children's mental health services
Chester Valley Ministers Association	Inter faith association to promote charity/services
American Job Center/One Stop	Employment support
MSBH Roundtable on Homelessness	Homeless services
Judy Center	Early childhood development
LDAAC Local Drug and Alcohol Abuse Council	Criminal justice, public health, social services coordination for opioid/other substance use issues
LMB Board	Interagency collaboration
Social Action for Racial Justice	Community equity initiative
KCPS Multi Cultural Committee	School equity initiative
KC Health Coalition	Public health
School Reform Grant Initiative	Local school reform
Local Care Team	Interagency case planning for children
Multidisciplinary Team	Interagency case planning for adults
Chesapeake Heartland	Public/Community African American history
Chester River Wellness Alliance	KC as wellness destination
Support Our Schools	School reform
MSCF Non Profit Roundtable	Leadership development
Food Summit	Food security
Greater Chestertown Initiative	Social and economic development - local policy reform
ASAC adolescent substance abuse council	Teen drug use



# PARTNERS, PROGRAMS AND ASSETS

- County Administrator and Council
- Juvenile Services
- Core Service Agency
- Health Department
- Social Services
- School System
- Parks and Recreation
- Public Library
- Detention Center
- Arts Council
- Parents
- Community Members
- Youth
- Washington College
- Chesapeake College
- Local Businesses
- Bayside H.O.Y.A.S
- Churches
- Law Enforcement
- Non-Profits
- Behavioral Health Providers
- Faith based organizations
- League of Women Voters
- Historical Society
- Mentoring Programs



# CRITICAL LENSES ON OUR WORK



1

Two Generation Approach

2

Racial Equity

3

Home Visiting

4

Community Member-Driven,  
Group-Centered

5

Trauma-Informed  
and Holistic Care

FY 2020 – FY 2022

# PROGRAMMATIC INVESTMENTS



Program	Result Area	Indicator	Governor's Priority Area
<b>Healthy Families Mid-Shore</b>	Families Are Safe and Economically Stable	Child Poverty	Reducing Childhood Hunger
<b>Circlebuild</b>	Families Are Safe and Economically Stable Children Are Successful in School	Grandparents Raising Grandchildren Hunger Truancy	Impact of Incarceration
<b>Reconnect for Life</b>	Youth Have Opportunities for Employment and Career Readiness Families are Safe and Economically Stable	Youth Not Working or in School Child Poverty Hunger	Improving Outcomes for Disconnected Youth Reducing Childhood Hunger
<b>Truancy Reduction Program (pending)</b>	Children Are Successful in School	Truancy	Trauma-Informed Care and Reducing ACE





# THANK YOU

to everyone in Kent  
County who participated  
in the FY20 – FY22  
planning process!

## **KCLMB BOARD:**

William J. Clark, Chair

Myra Butler, Vice-Chair

Kathryn Dilley/Sherone Thompson

John Schratwieser

Annie Woodall

Deann Jones

Jamie Barrett

Shelly Neal-Edwards

William J. Webb/Gaile Yerki

Shelley Heller

Herbert Dennis

Janice Steffy

## **GUIDING COALITION:**

Arlene Lee

Shelia Lomax

John Price

Paul Tue III

Latoya Johnson

Nick Garcia

Robert Greenwald

Pat Nugent

Mark Hampton

Darius Johnston